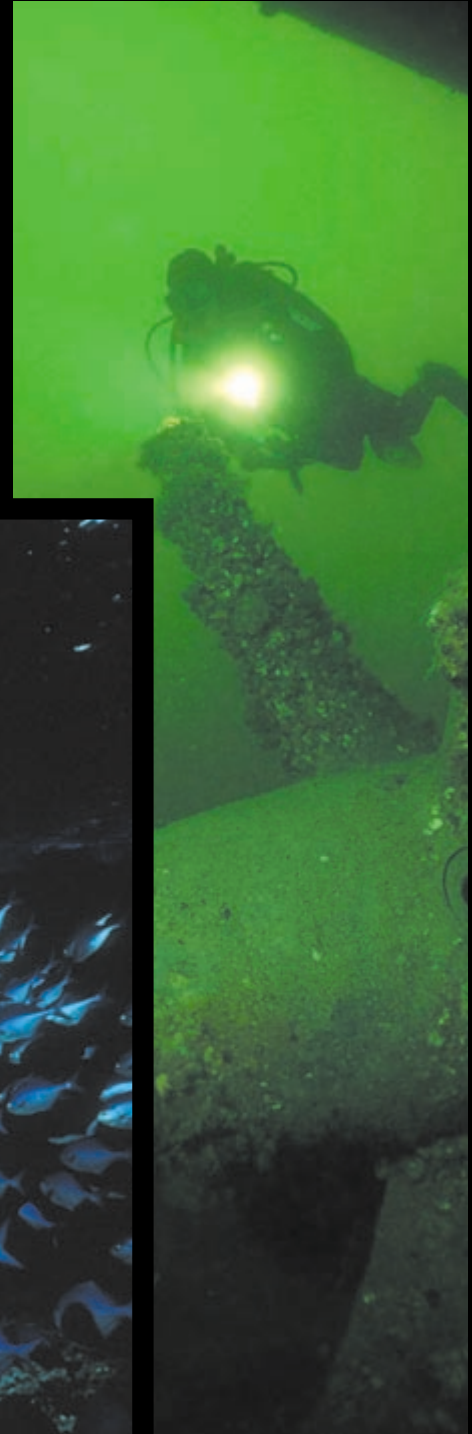


In-Depth Adventures

A selection of dedicated dive live-aboards and challenging diving options

New Zealand



FIRSTLIGHTTRAVEL
www.firstlighttravel.com



Island Discovery With Macy Gray

For divers seeking an unparalleled variety of underwater experiences, this is truly the trip of a lifetime. Beginning in the beautiful Bay Of Plenty, and arriving 350 miles later in Auckland's famous Hauraki Gulf, the expedition traverses some of the most pristine marine environment that New Zealand has to offer.



Over the course of a week the diving opportunities available include:

- White Island - the South Pacific's most active volcano.
- The Taioma - a wreck teeming with marine life.
- The Alderman Islands - on the edge of an undersea crater.
- Mayor Island - an offshore marine reserve.
- Shark cage diving!

Expeditions take place on the Macy Gray, a 52ft purpose-built dive boat designed specifically for New Zealand conditions. Her superior stability and large deck ensure safe and comfortable diving for all. Skipper Sean Kelly is an ex-Navy diver with an intimate knowledge of the region's underwater highlights.

For the duration of the week some of the most dramatic and unspoilt underwater scenery will be within your reach, and we can guarantee that no two days will be the same. Divers and underwater photographers will find the diversity offered by this tour to be truly breathtaking. We look forward to sharing the abundant charms of our New Zealand waters with you.



Mayor Island



Shark Cage Diving



Dive White Island Volcano

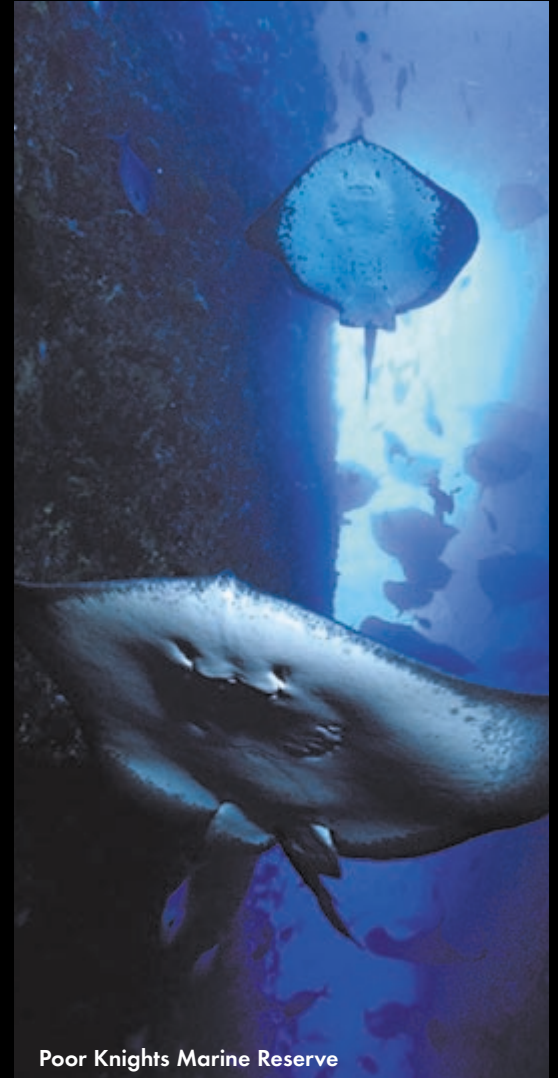
Expeditions with a Difference

The Poor Knights Islands marine reserve is one of the world's top temperate diving areas. The wealth of pristine diving available has rightly earned it the title Jewel of the Ocean. Just recently it has revealed a previously unseen gem to us – The Black Forest. First dived by Pete Mesley (see back page) in 2002, this reef rises sharply from a 100 metre (320 ft) sandy bottom and features 2000 year old Black Coral Trees 2-3 metres (6-10 ft) tall! Crystal clear water and abundant marine life cap off a stunning dive in a truly virgin marine environment.

For more information: www.firstlighttravel.com

Diving At Your Leisure Onboard **Tribeca**

Tribeca is the only luxury live-aboard dive vessel in New Zealand run by divers, for divers. This magnificent 58ft Salthouse launch aims to provide the highest quality diving experience available in New Zealand's Northern coastal marine region. The boat comes fully staffed with a qualified and experienced crew, committed to delivering a level of flexibility and personalised attention that is second to none.



Poor Knights Marine Reserve

Chartering Tribeca gives you access to some of New Zealand's premier dive locations. We can offer standard itineraries or tailor a charter to your requirements. Some of the many superb options include:

- The Poor Knights Islands – a marine reserve rated by Jacques Cousteau as one of the worlds' best dive sites.
- Wreck diving – including two former NZ Navy ships, and the Greenpeace ship the Rainbow Warrior.
- Three Kings Islands – a challenge for the more experienced diver.

Wherever you choose to take her, Tribeca is the ultimate diving vessel, fully equipped with a dive platform, compressor and high-powered inflatable. The skipper is also a dive instructor, with extensive experience in the Poor Knights area. We can even provide marine biologists to further enhance your experience.

The boat sleeps six guests in comfort, and its luxury fit-out ensures that every hour spent aboard this beautifully appointed launch is truly pleasurable. Advise us of your needs and we guarantee we will exceed your expectations!



FIRSTLIGHTTRAVEL
www.firstlighttravel.com



Rainbow Warrior

Expeditions To The Red Giant

The Wreck Of The Mikhail Lermontov

In the sheltered waters of the beautiful Marlborough Sounds lies New Zealand's largest wreck. In 1986 the 20,000 ton Russian ocean liner Mikhail Lermontov sank in controversial circumstances and now rests fully intact in 37 metres (115 ft) of water. This huge ship is rightly regarded as the best diveable ocean liner in the South Pacific.

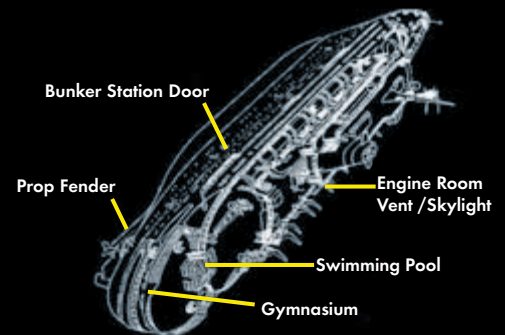


- 7 twin cabins
- Full bar and kitchen facilities
- Huge saloon with TV and video for viewing dive footage

While above water you are a guest onboard the spacious Sweet Georgia, a purpose-built live-aboard dive vessel.

Join expedition leader Pete Mesley in exploring the leviathan known as the 'Red Giant'. At her shallowest point she sits at 12 metres (38 ft) at an angle of 10 degrees bow up. This allows extended penetration times (with 90 minutes being the norm) with minimal, if any, decompression time. Now that's fun! Bottom visibility varies greatly from 5-20 metres, but inside the wreck it is always clear. Very dark, but clear!

Being a complete wreck, the Lermontov is a treasure trove of artefacts just waiting to be discovered. Everything from bottles of Russian vodka to a fully stocked library await you below decks. You may even come across a Russian doll! Divers with a keen sense of adventure will be spoilt for choice when they explore this unique underwater monument.



About Pete Mesley

Pete's wreck diving experience spans more than 13 years and he has logged over 100 hours on the Mikhail Lermontov alone. He has chalked up 3000+ hours in water worldwide and completed over 1500 dives in NZ waters. As a Dive Supervisor he has led expeditions ranging from Ice Diving to Deep Wreck explorations.

In June 2000 he headed the safety role of Support Supervisor for Tanya Streeter's 90 metre variable-ballast sled dive in NZ.

As well as being a PADI Course Director, Pete is a Technical Diving Instructor Trainer, TDI Advanced Trimix and CCR Instructor. His extensive history directing wreck dives to 100+ metres (320 ft) makes Pete New Zealand's pre-eminent wreck diver. He is the ultimate guide for those keen to visit our Russian giant.

